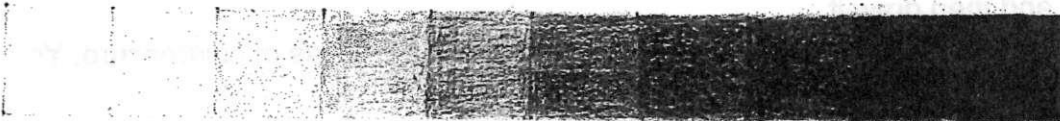
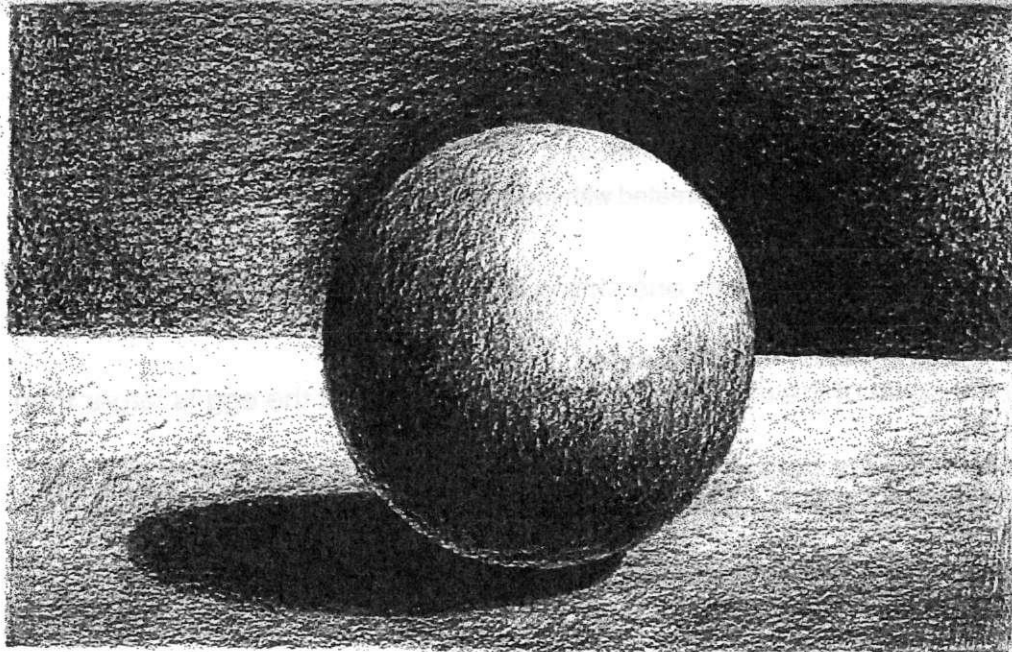


# CHIAROSCURO

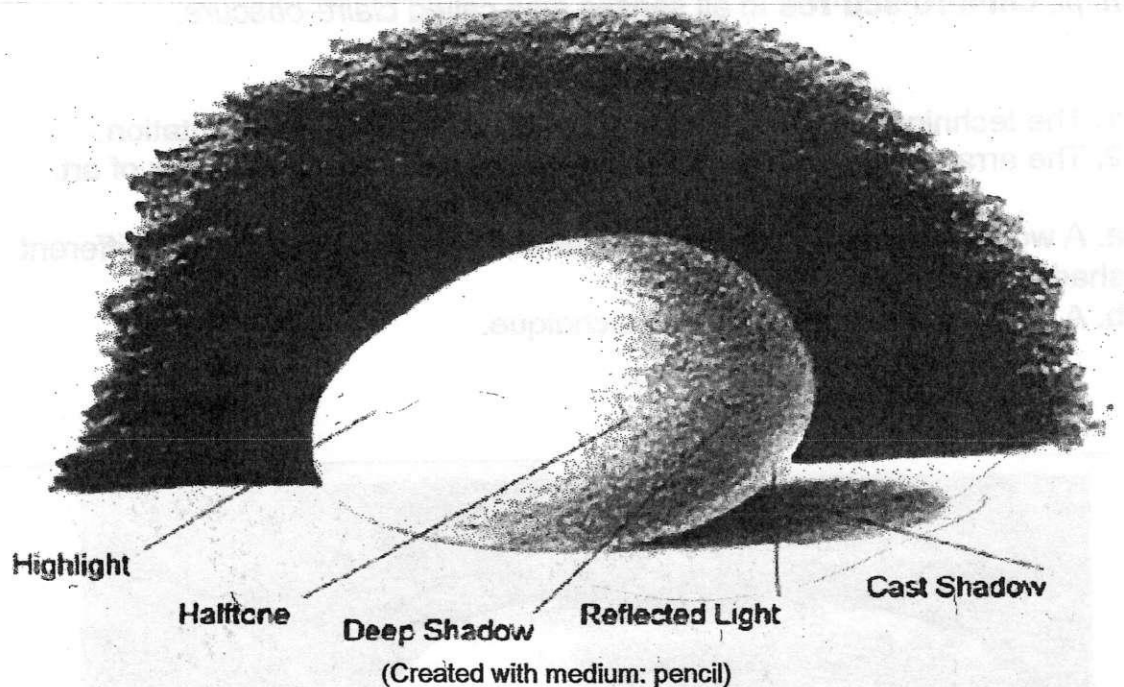
**chi-a-ro-scu-ro** (k-är-skr, -skyr)

*n. pl. chi-a-ro-scu-ros* In all senses also called *clair-obscure*.

1. The technique of using light and shade in pictorial representation.
2. The arrangement of light and dark elements in a pictorial work of art.
  - a. A woodcut technique in which several blocks are used to print different shades of a color.
  - b. A woodcut print made by this technique.



# Egg Chiaroscuro



1. Draw a white egg using only one strong light source close to the egg at about a 45-degree angle above.
2. Use a drawing pencil on white paper.
3. Make the scale of the drawing monumentalized so that the egg is larger than actual size.
4. There should be a horizon line behind the egg and the area above that line should be dark, so the highlights and halftones are in contrast with the background.
5. Include all five areas of chiaroscuro: highlight, halftone, deep shadow, reflected light, and cast shadow.
5. Shade by using continuous tone (sfumato).
6. Try to arrange the lighting so a full range of contrast is achieved on the actual egg, and then draw it.
7. The example is labeled to help you remember the 5 areas of chiaroscuro. Your drawing, however, should NOT be labeled.  
Take your time!